



NUMINA

Real-time insights from streets

CONTACT

Martin McGreal

martin@cty.io

[@heycty](#) // [@digitizdat](#)

We make cities **responsive.**

Numina delivers real-time activity data to

plan more equitable & efficient streets,

trigger on-demand services, and

A/B test the built environment.

What you see...



What Numina sees...

12+ pedestrians

1 bicyclist

1 wheelchair

1 delivery truck

#5L Fulton Ltd bus

#71 Haight / Noriega bus

2 utility vehicles

2 green lights



What Numina sees...

12+ pedestrians 4+ at bus stop
1 at SE corner

1 bicyclist in bike lane

1 wheelchair

1 delivery truck parked

#5L Fulton Ltd bus southbound

#71 Haight / Noriega bus southbound at stop

2 utility vehicles parked

2 green lights



What Numina sees...

12+ pedestrians 4+ at bus stop boarding
1 at SE corner waiting

1 bicyclist in bike lane 12mph

1 wheelchair

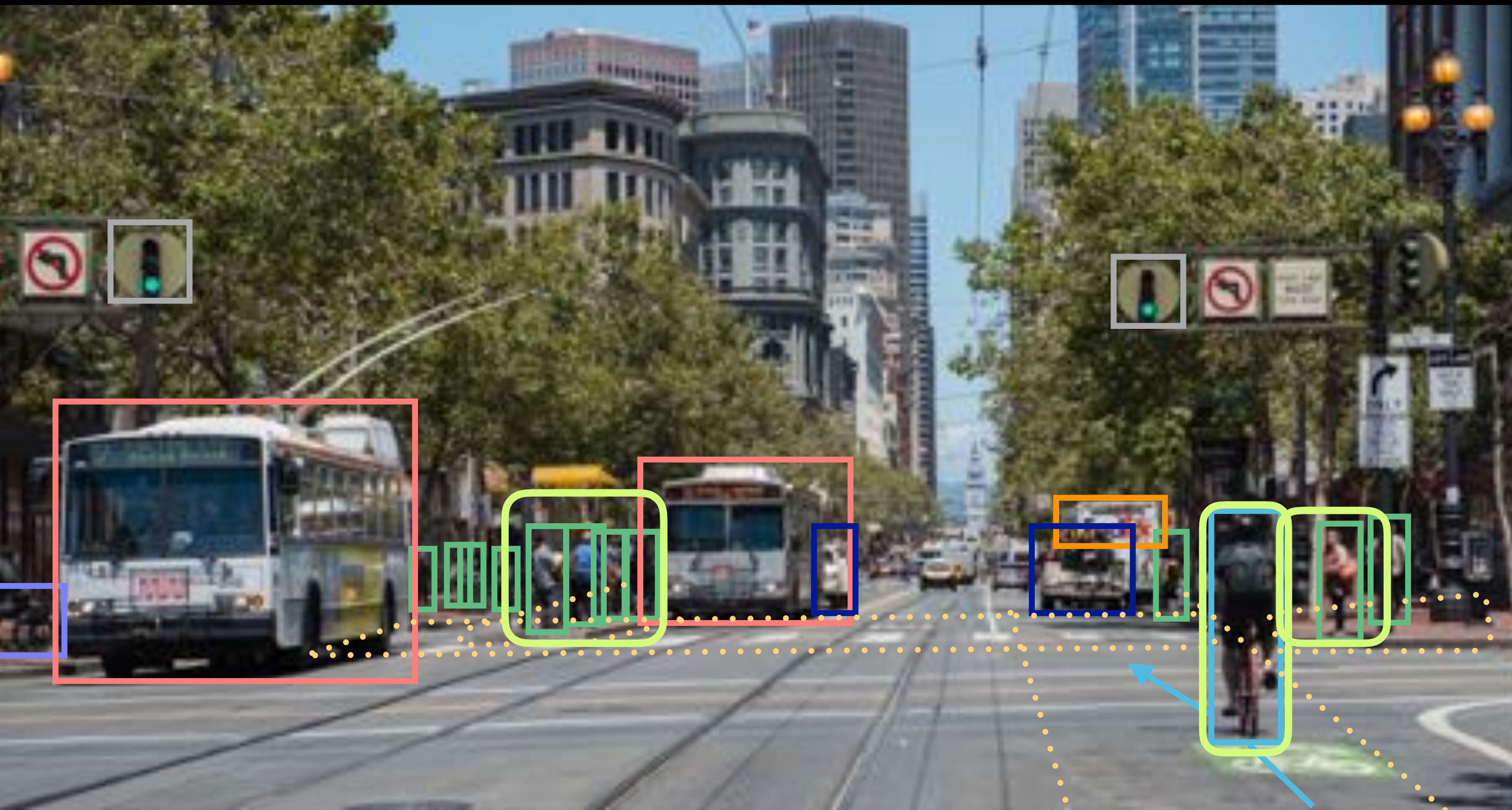
1 delivery truck parked

#5L Fulton Ltd bus southbound

#71 Haight / Noriega bus southbound at stop

2 utility vehicles parked

2 green lights



NUMINA'S UNIQUE FEATURES

Pop up anywhere

Process data on-board

Measure *anything you can see*



Posted November 16, 2016 04:57 pm

By Dan Scanlan

dan.scanlan@jacksonville.com

Deadly stretch of New Kings Road coined 'Danger Zone' after 4 pedestrian deaths in 1 week

2 Comments 30 Share



Lt. J. Paris of the Jacksonville Sheriff's Office holds an off-site roll call in a parking lot along New Kings Road last week with



In Jacksonville!



Timeline



KEY INGREDIENTS

Planning

identify need

Funding

allocate resources

Implementation

execute!

Health 2.0 

 Knight Foundation




Robert Wood Johnson Foundation





Urban Innovation checklist

- ☐ Clearly defined problem; buy-in for chosen solution
- ☐ Invested stakeholder organizations
 - ☐ Internal champions and project owners
- ☐ Interdepartmental collaboration
 - ☐ Good communication tools & protocols
- ☐ KPIs and definition for project “success”
- ☐ Plan for long-term expansion or sustainability
- ☐ Patience, Passion, Persistence



THANK YOU

CONTACT

Martin McGreal

martin@cty.io

[@heycty](#) // [@digitizdat](#)



1. **Baseline bike/ped data**

to prioritize intersection safety based on usage

- The City does not have basic info on street usage.
- Numina data will help them identify highest-impact sites for redesign.

2. **A/B test redesigns**

using tactical urbanism approaches to infrastructure

- Compare interventions using a tactical urbanism approach.
- Deploy “pop-up” infrastructure to vet investment opportunities.

3. **Assess permanent interventions**

for long-term awareness of impact and responsiveness

- Report whether or not chosen infrastructure has intended effect.
- Empower the City to iterate on improvements on an ongoing basis.

LOST

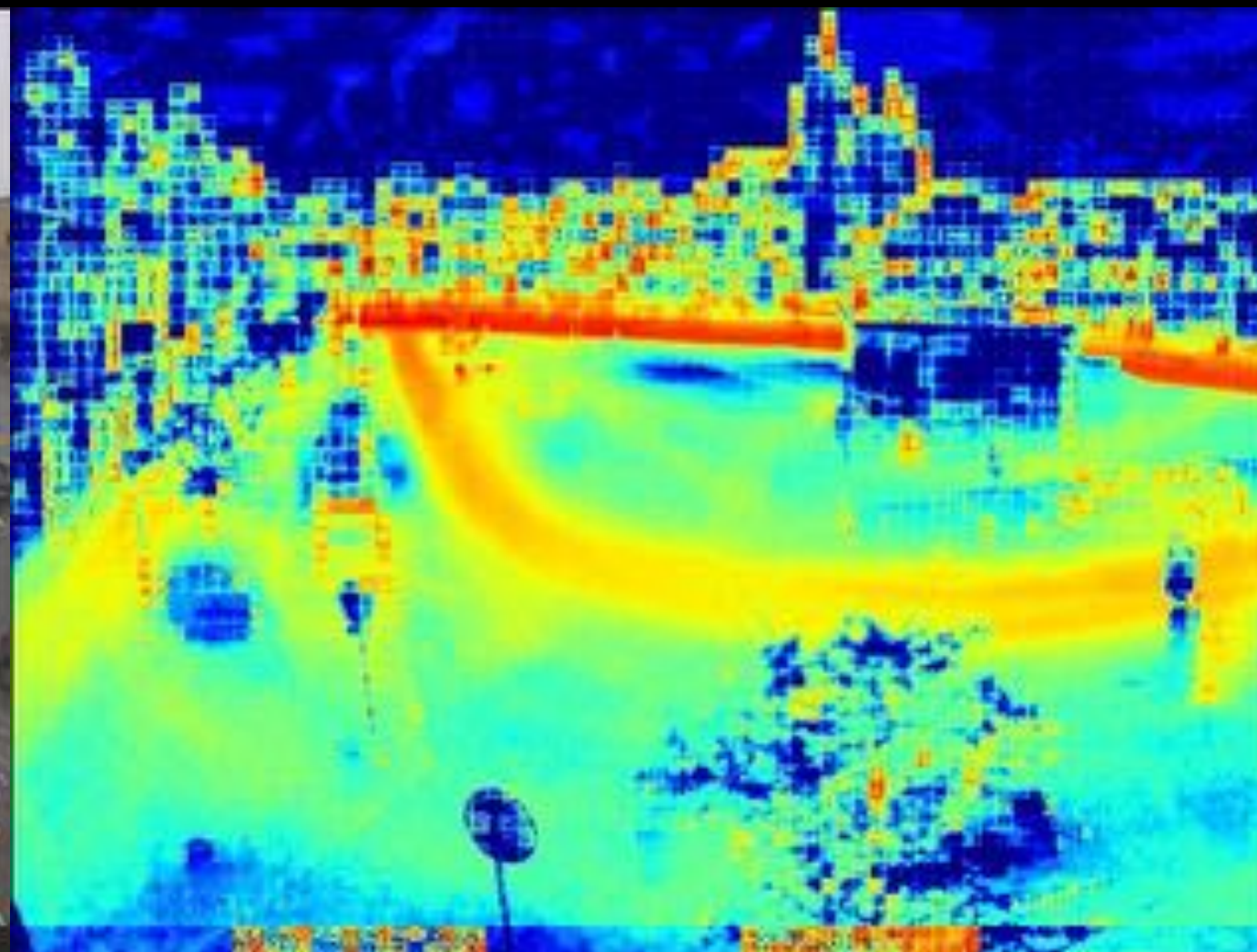
Heat Maps

Object behaviors,
not just counts

Welcome to The Longterm Observation of Scenes with Tracks Dataset

The LOST Dataset comprises videos taken from streaming outdoor webcams, capturing the same half hour each day. Data collection started in June of 2010 and continues to this day. LOST contains rich metadata, including geolocation, object detections, and tracking results.

To date, we have captured 16,009 videos, for a total of 155,029,134 frames and 727 Gb of compressed video data. Watching it all would take over 258 days, 2 hours, and 24 minutes. Processing this data has given us 434,046,047 object detections and 1,243,475 tracks.



MORE AT: [HTTP://LOST.CSE.WUSTL.EDU/](http://lost.cse.wustl.edu/)



Who we are



Tara Pham
CEO



Martin McGreal
CTO

Our founders

- + have worked together since 2014, after both were hit by vehicles while riding their bikes
- + won a \$50k hackathon
- + bootstrapped the development of a computer-vision sensor deployed in major cities!

urban design

public health + urban planning
Next City Vanguard

+

machine learning

machine learning, DevOps, + security
18 years in Fortune 100 innovation offices

Team



Paul de Konkoly Thege
Operations
previously **Boeing Ventures**,
Venture for America



Zach Teed
Computer Vision
previously **Sandia National Labs**



Dean Di Pietro
Hardware
previously **OXO**,
23 yrs. in product design



Who's with us

Advisors



Robert Pless, PhD
George Washington University
Chair of Computer Science,
Computer vision expert



Frank Vallese, PhD
ePhysics Technologies
CEO for 25 years,
EE & sensor expert

Investors

U R B A N - X



SUSV

Funders*

 **Knight Foundation**


Robert Wood Johnson Foundation



Health 2.0 

*non-dilutive